

## Corneal and lenticular pigmentation from long-term chlorpromazine use

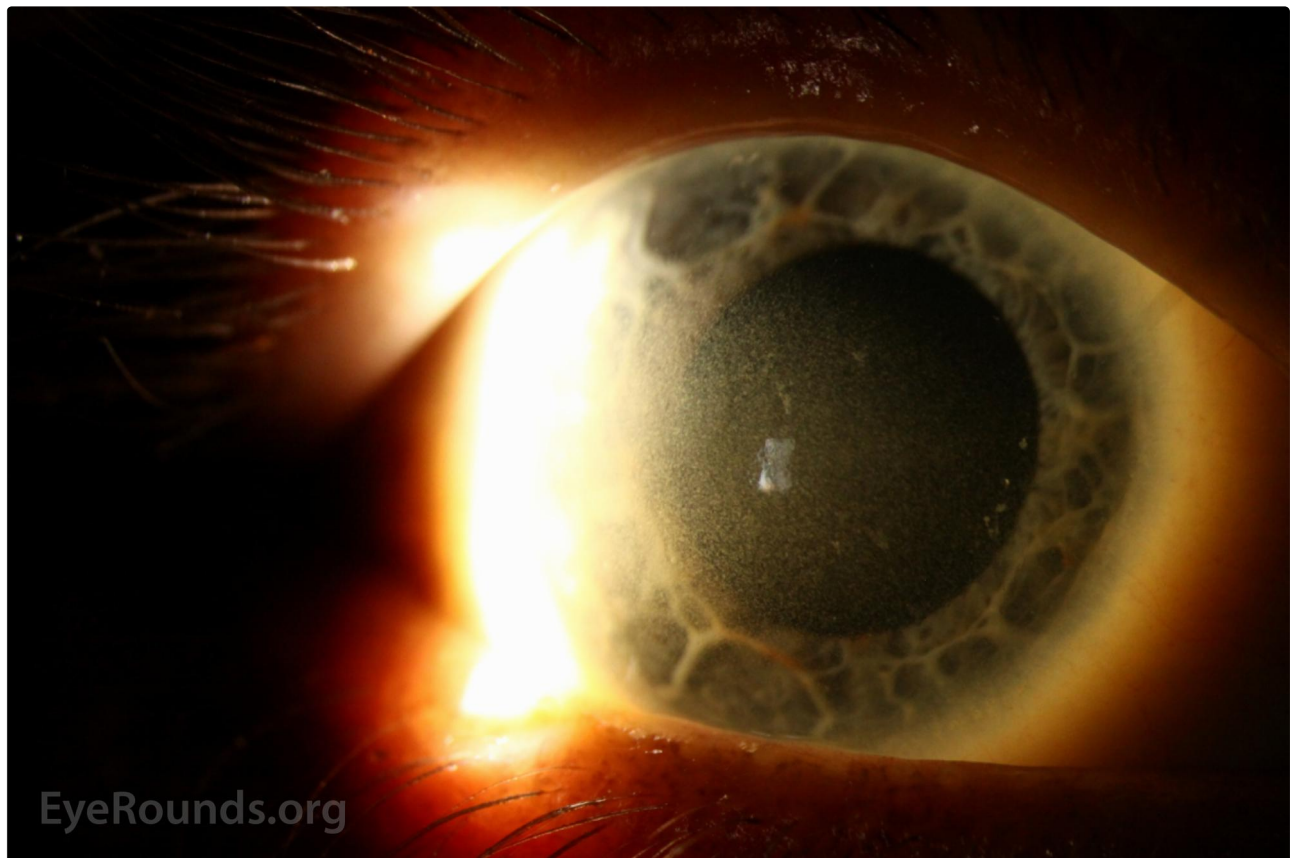
**Category(ies):** Cornea, Lens

**Contributor:** Zachary Q. Mortensen, MD; [Ryan J. Diel, MD](#); [A. Tim Johnson, MD](#)

**Photographer:** D. Brice Critser, CRA, OCT-C



55-year-old male with history of schizophrenia and long term chlorpromazine use. There is blue-gray dyspigmentation of the nose, bilateral cheeks, forearms, dorsal hands and arms in photo-distributed areas. Slit lamp examination shows diffuse punctate corneal deposits through the posterior stroma, descemet membrane, and endothelium of the cornea.

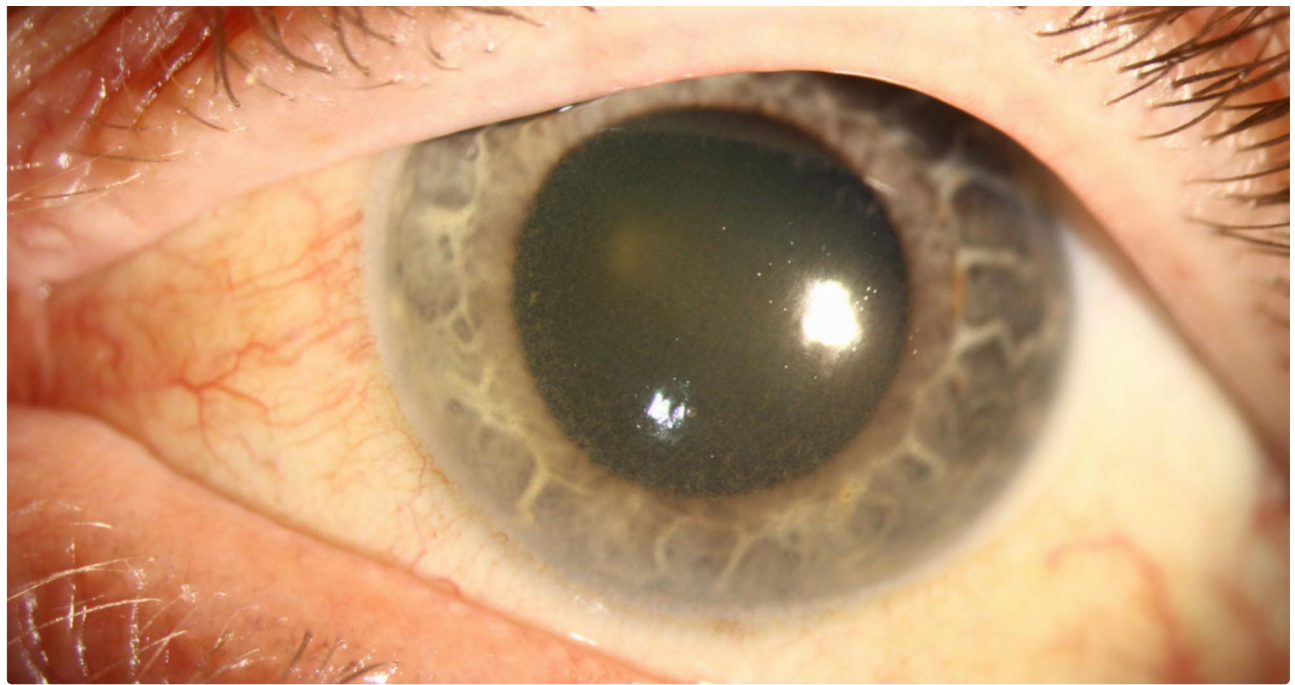


EyeRounds.org

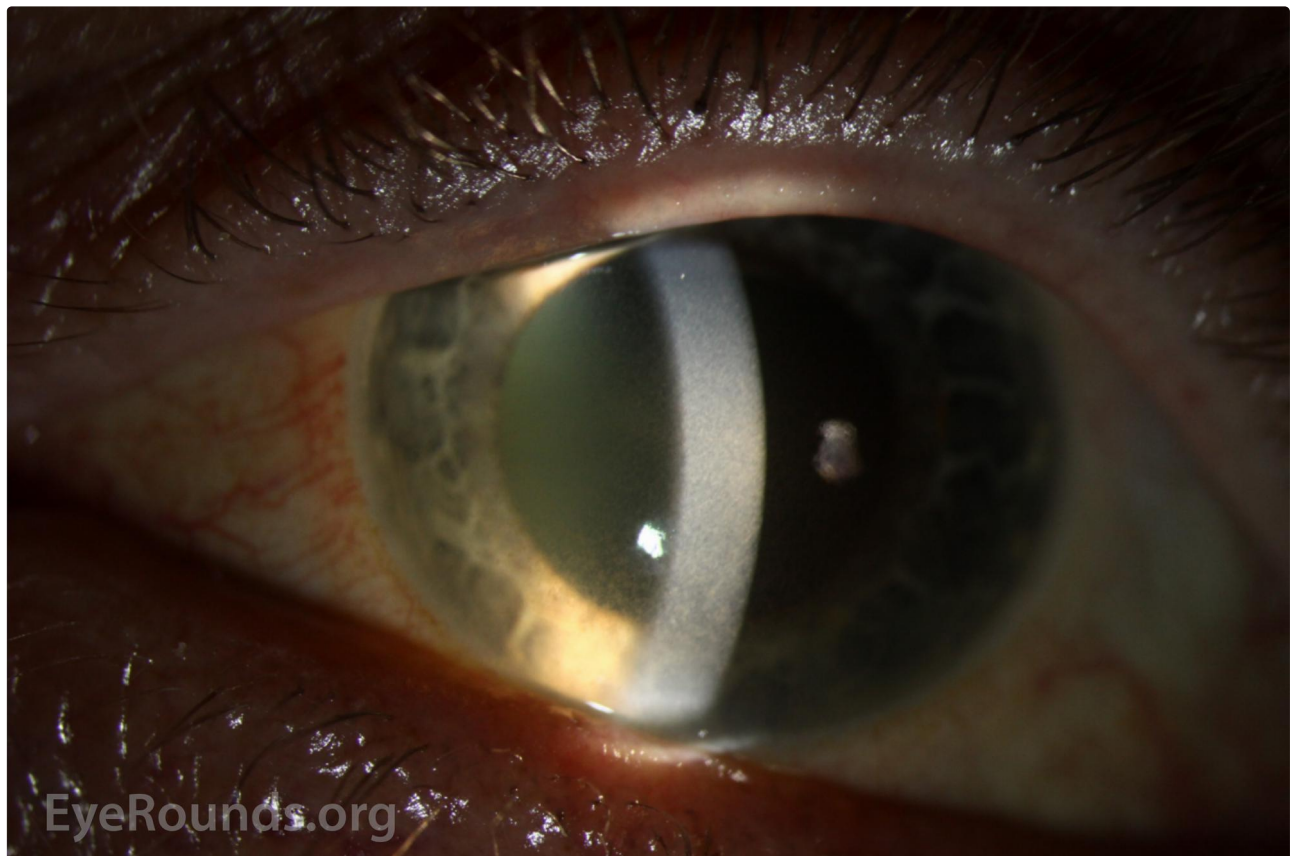
[Enlarge](#) [Download](#)



EyeRounds.org



[Enlarge](#) [Download](#)



EyeRounds.org

[Enlarge](#) [Download](#)

**Contributor:** Elizabeth Gauger, MD

**Photographer:** D. Brice Critser, CRA, OCT-C

Corneal and lenticular pigmentation from long-term chlorpromazine use

59-year-old male with history of schizophrenia and long-term chlorpromazine (thorazine) treatment. His ocular exam is notable for fine

65-year-old male with history of schizophrenia and long-term chlorpromazine (Thorazine) treatment. His ocular exam is notable for fine pigment deposition in the posterior corneal stroma and endothelium. In addition, there is pigmentation in a stellate pattern on the anterior lens and lens capsule. This rarely causes a decrease in visual acuity.

These findings are characteristic of long-term thorazine use and are suspected to be related to dose and duration of treatment. It is recommended that persons undergoing long-term treatment with thorazine have regular eye examinations.



[Enlarge](#) [Download](#)



[Enlarge](#) [Download](#)





[Enlarge](#) [Download](#)

### References:

1. Huff, L S, Prado, R, Pederson, JF, Dunnick, CA, Lucas, LM (2014). Chlorpromazine-induced skin pigmentation with corneal and lens opacities. *Cutis*, 93(5), 247-250.
2. Gupta, A., Agarwal, A., & Ram, J. (2014). Reversal of Toxic Manifestations of Chlorpromazine. *JAMA ophthalmology*, 132(10), 1177-1177.

### Image Permissions:



Ophthalmic Atlas Images by [EyeRounds.org](https://www.eyerounds.org), [The University of Iowa](https://www.theuniversityofiowa.edu) are licensed under a [Creative Commons Attribution-NonCommercial-NoDerivs 3.0 Unported License](https://creativecommons.org/licenses/by-nc-nd/3.0/).

### Address

University of Iowa  
Roy J. and Lucille A. Carver College  
of Medicine  
Department of Ophthalmology and  
Visual Sciences  
200 Hawkins Drive  
Iowa City, IA 52242

[Support Us](#)

### Legal

Copyright © 2019 The University of  
Iowa. All Rights Reserved  
[Report an issue with this page](#)  
[Web Privacy Policy](#) |  
[Nondiscrimination Statement](#)

### Related Links

[Cataract Surgery for Greenhorns](#)  
[EyeTransillumination](#)  
[Gonioscopy.org](#)  
[Iowa Glaucoma Curriculum](#)  
[Iowa Wet Lab](#)  
[Patient Information](#)  
[Stone Rounds](#)  
[The Best Hits Bookshelf](#)

### EyeRounds Social Media

Follow



Receive notification of new cases,  
sign up here  
[Contact Us](#)  
[Submit a Suggestion](#)